

LS-DYNA, Advanced training class in impact analysis - Paul du Bois

May 26-29, 2009

We are pleased to announce this very popular course taught by Paul du Bois. Every serious LS-DYNA user should attend this course each 2nd or 3rd year. Be sure not to miss it, since the number of attendee is limited to 12!

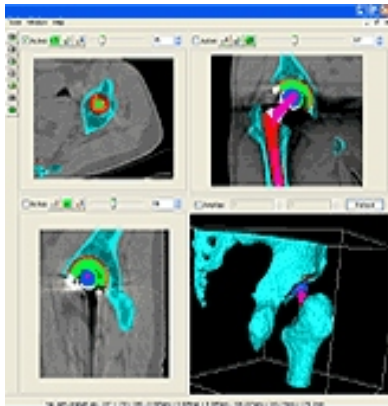
This course is intended for the LS-DYNA user working on impact problems, and in particular on crashworthiness problems. The course gives a guideline on how to set up the often complex FE models, how to choose the element types, material models, contact interfaces etc. Many common pitfalls are discussed and solutions for their elimination are given. Several problems are solved during the workshop part of the course.

Price: 14000 SEK excl. VAT
Questions: course@erab.se

Engineering Research is now distributor of Simpleware

Simpleware provides world-leading software solutions for robust, fast and easy conversion of any volumetric 3D data such as MRI, CT, and MicroCT into high quality meshes, which can be used for:

- * FEM
- * CFD
- * CAD
- * Rapid Prototyping



Please contact karin@erab.se for more information.

Office downtime 22/12 - 6/1

Please note that the email address support@erab.se will not be monitored during this period. For urgent matters, call +46 (0) 13 23 66 80 which will be manned during office hours.

LS-DYNA Introductory Course

Date: 9 - 11 March, 2009
Price: 7500 SEK excl. VAT
Place: ERAB's office
Questions: course@erab.se
Register: www.erab.se/courses

Call for Papers!

Dynamore hosts the 7th European LS-DYNA Conference in Salzburg, Austria, on May 14-15, 2009.

For more information visit www.dynamore.de.

Please note that the deadline for abstract submission is 12th January 2009.

Report from the Nordic LS-DYNA Users' Forum

The Nordic LS-DYNA Users' Forum was successfully held at Quality Hotel 11 in Gothenburg on October 2, 2008. The Forum offers a unique possibility for LS-DYNA users to learn about the latest developments of LS-DYNA, LS-OPT, and LS-PREPOST, directly from the developers. This year, the Forum brought together more than 130 LS-DYNA users, researchers and developers to discuss the simulation of complex mechanical problems. Invited speakers shared their experiences of LS-DYNA simulations in cutting-edge applications of metal forming, crash, occupant simulation, material modeling and more. The training classes given in close connection to the Forum were very appreciated. A special thanks goes to our sponsors Microsoft and IBM!

Engineering Research Nordic AB was delighted that this years Forum got such a positive response from the participants and we look forward to arrange the next Nordic LS-DYNA Users' Forum in 2010.

3rd ANSA & μ ETA International Conference

BETA CAE Systems S.A. invites you to Halkidiki, Greece, September 9-11, 2009.

Read more at:
www.beta-cae.gr/3rd_conference_announcement.htm

Submit your abstracts by email, no later than February 28, 2009.

*Merry Christmas and
Happy New Year!*