

Dear Reader

We are happy to send you this newsletter containing posts on the breakfast seminar, the new tire and barrier models, LS-Opt 6, ANSA 20, upcoming seminars and more. Please scroll down to read the articles.

All the best!

Your Nordic DYNAmore Team



DYNAmore Nordic Breakfast Seminar 2019

Our **customers** and **business partners** are welcome to join us for a morning coffee with interesting presentations by our engineers and recent development in LS-DYNA. The Breakfast Seminar will visit Jönköping, Göteborg and Luleå. Please visit [our website](#) for more details and registration.

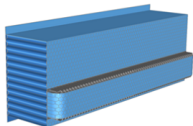
Remember to reserve your seat because of the limited number of seats.



LSTC-FCA Tire Model for all LSTC Customers

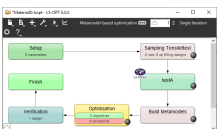
LSTC and DYNAmore are pleased to announce the immediate availability of Tire models jointly developed with FCA for all customers. The models have been validated through several different component and system tests and are available in several different tire sizes. The tire models are available for download through your [Pydio account](#). Want to learn more about the model?

Please [Register to the Webex](#) (August 28 at 15:00) with Suri Bala from LSTC.



New Barrier Model Released

Arup, in collaboration with Cellbond, has developed an LS-DYNA shell model of the NHTSA Side and Rear Impact Barrier. The model is an upgrade of the already available solid model, not only showing good force-displacement correlations compared with test results, but also offering more realistic barrier deformation behaviour. This was achieved through extensive material calibration and component/full barrier validation (facilitated by a comprehensive testing campaign).



LS-OPT 6 is now available

A new major version 6.0 of LS-OPT has been released. LS-OPT is included with LS-DYNA and does design optimization, material parameter identification, robustness analysis and much more. Selected new features include:

- Classifier-based constraint definitions
- Even better curve fitting for material parameter identification and more using the new curve similarity measures Discrete Frechet and Dynamic Time Warping
- Parameter identification using Digital Image Correlation (DIC). ARAMIS(Xml) output data is among the supported formats.
- Taguchi method for robust design.

Also note the new updated training material with training examples. The training material and complete release notes on LS-OPT 6.0 are available [on your Pydio account](#) in folder: *Products/Software/LSTC/LS-OPT*



ANSA 20.0.0

BETA CAE Systems announces the release of the new ANSA/EPILYSIS/META suite v20.0.0. There are many new tools and improvements to look forward to in this release.

Please follow [this link to BETA's website](#) for highlight videos and more details.



May 31 to June 2, 2020

The 16th International LS-DYNA Conference will be held for the first time at the Detroit Marriott at the Renaissance Center in Detroit, USA. The Call for Papers is already running.

We look forward to receiving numerous submissions until October 30, 2019.

» [Submit an abstract](#)

» [Conference website](#)



Digmat Users' Conference 2019

October 1-3 in Bordeaux, France

This year's agenda will host the best-in-class presenters from the industries, among all automotive, aerospace, additive manufacturing, as well as material suppliers from around world. DYNAmore Nordics' Dr Mats Landervik will present a paper using Digmat and LS-DYNA for modeling of Microcellular short fibre reinforced plastics for pedestrian safety. [Check out the agenda and/or register!](#)



HUMANETICS Crash Meeting

September 26-27

Humanetics is excited to host another year of the annual European Crash Meeting with industry leaders and experts to discuss the latest insights, news and technical updates on ATD related topics. [Check out the agenda and/or register!](#)

SEMINARS



August

26 [Polymers/Elastomers Filled!](#)

27 - 29 [Introduction to LS-DYNA Few seats left!](#)

September

4 - 5 [Non-Linear Implicit Analysis in LS-DYNA Few seats left!](#)

17 - 19 [LS-OPT - Optimization & Robustness Few seats left!](#)

17 - 18 [LS-OPT - Optimization](#)

18 [Introduction to ICFD solver](#)

19 [LS-OPT - Robustness](#)

24 - 26 [Introduction to LS-DYNA Few seats left!](#)

October

1 [Contacts in LS-DYNA](#)

2 [ANSA CFD meshing, intro course](#)

9 - 10 [Introduction to ANSA & mETA](#)

15 - 16 [Introduction to Passive Safety in LS-DYNA](#)

17 [Element Types & Nonlinear Aspects Few seats left!](#)

22 - 23 [Joining Techniques in LS-DYNA](#)

22 - 24 [Introduction to LS-DYNA](#)



LS-DYNA R11.0.0 / R9.3.0

LS-OPT 6.0

LS-PrePost 4.6

LS-TaSC 4.0

LSTC-WinSuite R11

ANSA 20.0

Diffcrash 6.1.37

Digimat 2018.1

Dynaform 5.9.4

Femzip 9.5.3

FormingSuite 2019.1

Oasys 16.0

Best regards/Med vänliga hälsningar

DYNAmore Nordic

T: +46 - (0)13 236680

E: info@dynamore.se

www.dynamore.se

Popular links: [News](#) | [Seminars & Training](#) | [Meet DYNAmore](#)

[Subscribe to Newsletter](#) or [Unsubscribe to email news](#)

[Edit your personal information](#) or [Request to be deleted](#)