

Dear Reader,

We are pleased to send you some recent information about LS-DYNA and our services at [DYNAmore Nordic](#).



Summer greetings from DYNAmore Nordic

We wish all our customers, suppliers and partners a relaxing summer holiday. We would also like to inform you that we have reduced service from July 19 to August 1. If you should need our support, please send an email as usual to [Support](#). The response time might be longer during this period.

WEBinars

DYNAmore Nordic client area

We know it can be tough to wait until after summer for new DYNAmore webinars! But, until then, check out previous webinars on our Client Area, available to all DYNAmore Nordic's customers; maybe there is one you missed, or why not revisit a favorite such as Load history management using *CASE?

Load history management using *CASE is a new approach to analyzing load histories in LS-DYNA: combining new developments and extended functionality with existing features of LS-DYNA. This approach makes it possible to run a sequence of load steps as a sequence of analyses.

Webinars, guidelines, tutorials, examples, benchmarks, and more are available on [DYNAmore Nordic Client Area](#), available only to DYNAmore Nordic customers. Please contact [Support](#) to get access.



Seminars for fall 2021 are scheduled

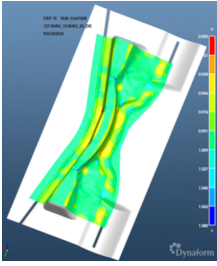
Our seminar offers for fall 2021 are now scheduled and available on our website. Here you can find everything from introductory trainings to seminars on more specific topics presented by DYNAmore specialists or invited lecturers. An investment in knowledge allows you to be more efficient in your realistic simulations. All seminars are performed online, using WebEx, until further notice.

[Please find the seminars and webinars on our website.](#)



Crash Analysis seminar

Do you want to get more profound knowledge in crash simulations? Register for the advanced Crash Analysis seminar October 25-28 in Gothenburg. The course aims to show how to perform an accurate and reliable crashworthiness simulation by thorough modeling and further understanding of the procedures. The lecturers are Paul Du Bois and Suri Bala. Please visit [Crash Analysis seminar page](#) for further information.



Dynaform 6.1.2 released

The latest production version of Dynaform is 6.1.2 and it was recently released. Dynaform is a pre- and post-processor tailored for simulation various sheet metal forming using LS-DYNA as a solver. The latest version includes bug fixes and enhancements in several parts of the software e.g. enhanced nesting functionality in the BSE solver and added annealing stage for formability simulations. The update requires no additional license update from 6.1 and can be downloaded from [DYNAmore Nordic client area](#).



SAFER Active Human Body Models

The SAFER A-HBM5 project started in April and will continue until March 2023. FFI is the financier and project partners are Volvo Cars, Autoliv, Chalmers and DYNAmore.

This is state-of-the-art research on car occupant muscle responses and development of active human body models (HBM) and is part of a continuous line of research projects working in sequence towards the evolution of an even more advanced SAFER Human Body Model.

More information at [SAFER](#).



Upcoming seminars and webinars

All seminars by DYNAmore Nordic are given online until further notice. View the upcoming events below or visit our respective websites for the complete schedule with content descriptions.

[>>DYNAmore Nordic seminars](#) [>>DYNAmore GmbH seminars](#)

DYNAmore Nordic

SEMINARS

- Introduction to LS-DYNA, August 31-September 2
- Parameter Identification with LS-OPT, September 7
- From Explicit to Implicit Simulation Models in LS-DYNA, September 8-9

WEBINARS

- No webinars scheduled at the moment

Most webinars are available in our client area at <https://files.dynamore.se/>



LATEST RELEASES

LS-DYNA R12.0	ANSA 21.1.3	Femzip 10.68
LS-DYNA R9.3.1	Diffcrash 6.1.37	FormingSuite 2020.0
LS-OPT 7.0.1	Digmat 2021.2	Moldex3D 2020 R4
LS-PrePost 4.8	Dynaform 6.1.2	Oasys Suite 18.0
LS-TaSC 4.2		
LSTC-WinSuite R12.0		

T: +46 (0)13 236680, E: info@dynamore.se, www.dynamore.se
Popular links: [News](#) | [Seminars & Training](#) | [Meet DYNAmore](#)
[Subscribe to Newsletter](#) or [Unsubscribe to email news](#)
[Edit your personal information](#) or [Request to be deleted](#)

