



Dear newsletter reader,

At DYNAmore, we look forward to a new year with the hope of having more opportunities to meet you in person again at support visits, conferences and seminars.

We wish you all a Merry Christmas and a Happy New Year.



DYNAmore Nordic closed December 24th to January 3rd

We have reduced staff during the holidays, so our response times may be longer than normal.

The offices in Linköping and Gothenburg will be closed from 24 December to 3 January.



Register your Master Thesis at DYNAmore Nordic

Last year DYNAmore Nordic issued an initiative to work closer with master students using LS-DYNA for their master thesis with our customers. We believe that the co-operation was very fruitful and we would therefore like to offer free courses or webinars, tailor made examples, personal support and publishing of the thesis on any of our channels to this year Master Students. To be eligible for this support, please register your Master Thesis using the link below. For more information visit our website.

[DYNAmore Nordic Master Thesis Registration 2021](#)

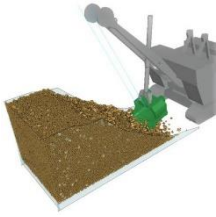


Seminars for 2021 are now scheduled

Our seminar offers for 2021 are now scheduled and available on our website. Here you can find everything from introductory trainings to seminars on more specific topics. An investment in knowledge allows you to be more efficient in your realistic simulations.

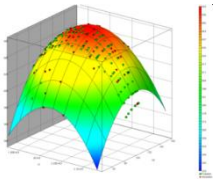
All seminars are performed online, using WebEx, until further notice.

Please visit our website for more information and registration.



Full-scale FE-DEM simulations for mining applications

LS-DYNA is used in a mining application at Boliden Mineral and Luleå University, presented in a paper recently published by A. Svanberg, et. al. It presents a full-scale simulation of a machine filling the shovel with fragmented rocks and stones. Full article available at [SpringerLink](#).



LS-OPT 7.0 is released

LS-OPT is the powerful design optimization and robustness analysis tool that is included free of charge with LS-DYNA. LS-OPT has many applications in the automotive and other industries. LS-OPT 7 is now released with many exciting enhancements and improvements. A focus in this release is on improvements regarding managing and submitting optimization jobs to computer clusters. This is driven by customers that use LS-OPT for massive optimization jobs involving thousands of simulations. Improvements in this area include a completely redesigned job scheduler and manager for simulation jobs running on computer clusters.

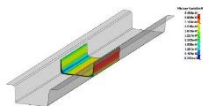
For more information on LS-OPT including examples, please visit www.lsoptsupport.com/.



Ansa and Meta v21.0.1 released

BETA CAE Systems have announced the release of the ANSA/EPILYSIS/META suite v21.0.1.

Many new features and recent developments are implemented. An overview of the new features in v21.x can be viewed on [BETA CAE System YouTube channel](#).



DYNAmore Nordic partner in MADBOND research project

Modelling of adhesive bonding for multi-material design, MADBOND, is a Vinnova funded research project coordinated by Swerim. The aim is highly accurate virtual manufacturing of multi-material structures through the development of engineering tools that capture the adhesive and component deformation behavior in existing joining processes.

[Swerim Madbond news on LinkedIn](#).



Upcoming seminars and webinars

All seminars by DYNAmore Nordic are given online during the pandemic. View the upcoming sessions below or visit our respective websites for the complete schedule and content descriptions.

[>>DYNAmore Nordic seminars](#) [>>DYNAmore GmbH seminars](#)

DYNAmore Nordic

SEMINARS

- Introduction to LS-DYNA, February 2-4
- Ansa CFD meshing, February 2
- LS-DYNA, Simulation of sheet metal forming processes, February 9-11

WEBINARS

- To be decided
- Most previous webinars are available in the client area at <https://files.dynamore.se/>



LATEST RELEASES

LS-DYNA R12.0	ANSA 21.0.1	Femzip 10.68
LS-DYNA R9.3.1	Diffcrash 6.1.37	FormingSuite 2020.0
LS-OPT 7.0	Digmat 2020 FP1	Moldex3D 2020 R3
LS-PrePost 4.7	Dynaform 6.0	Oasys 17.1
LS-TaSC 4.2		
LSTC-WinSuite R12.0		

Best regards/Med vänliga hälsningar
DYNAmore Nordic

T: +46 (0)13 236680, E: info@dynamore.se, www.dynamore.se

Popular links: [News](#) | [Seminars & Training](#) | [Meet DYNAmore](#)

[Subscribe to Newsletter](#) or [Unsubscribe to email news](#)

[Edit your personal information](#) or [Request to be deleted](#)

